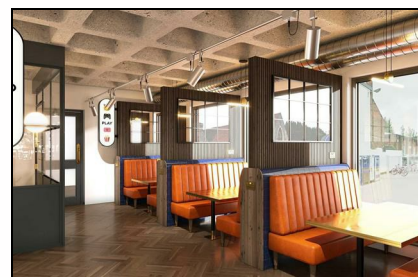


Westgate One
Canterbury
CT1 2WU

£1,330 Per Calendar Month

Finn's
82 Castle Street
Canterbury
CT1 2QD
t: 01227 452111
e: canterbury@finns.co.uk
www.finns.co.uk



BRAND NEW STUDIO APARTMENT - AVAILABLE SEPT 2025

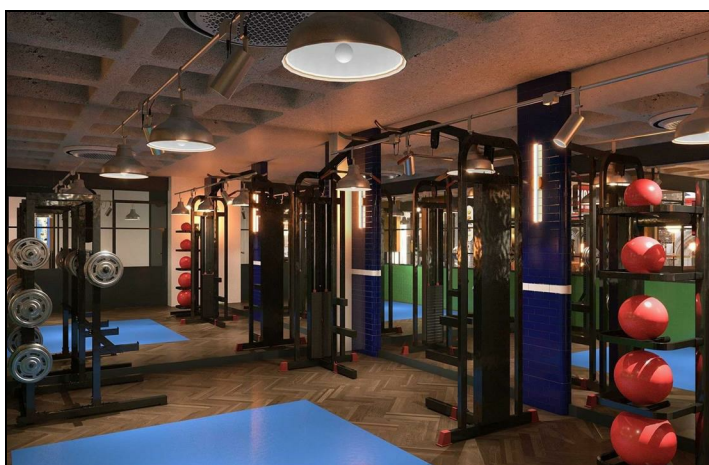
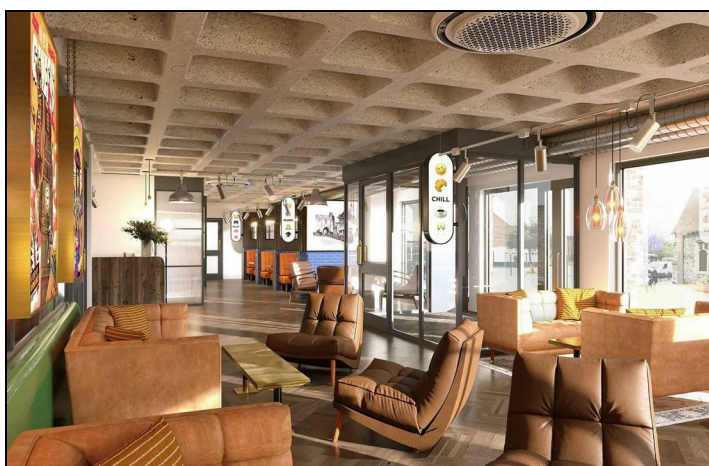
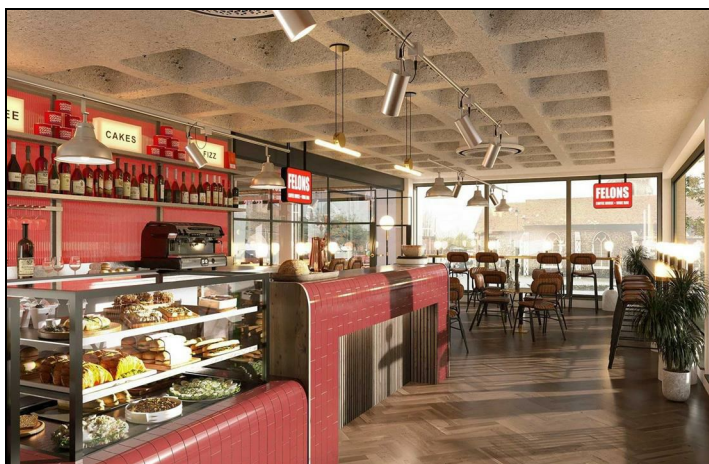
A stylish, one bed studio apartment, fully equipped with a modern kitchen, separate study space, king size bed, plenty of storage and en-suite shower room.

Rent includes all your utility bills and high speed wi-fi. There is a Fair Usage Policy in place and if there is any over-usage from the terms in the FUP, this is charged at the end of the tenancy.

Facilities include: Electric ceramic hob, oven, microwave, Breakfast bar/dining area with bar stool, heated towel rail, electric shower, landscaped courtyard and social areas, bicycle racks. For your safety there is keyless electronic door entry system, CCTV, monitored fire alarm and sprinkler system, dusk 'til dawn courtyard lighting.

*PLEASE NOTE PHOTOS ARE AN EXAMPLE OF OUR STUDIOS AND MAY NOT BE THIS EXACT PROPERTY

- Westgate One Student Amenity Space (Sept 2025)
- Coffee Shop (Sept 2025) (Public Access)
- Access to fully equipped 24/7 gym (Sept 2025) (Westgate One tenants only)
- Cinema and Gaming Room (Sept 2025)
- Booth Seating and Study Space (including meeting room)
- Dedicated Reception Area, Communal Laundry Room
- King Size Bed
- Douche/Shattaf in selected apartments
- Deposit £1530.00
- AVAILABLE SEPTEMBER 2025



Viewing: By appointment through Finn's, Canterbury
Telephone: 01227 452111

Council Tax: Exempt
Date: These particulars were prepared on: 9th May 2025

Agent's Note: Wherever appliances or services, fixtures or fittings have been mentioned in these particulars they have not been tested by us. Measurements should not be relied upon. Unless specifically referred to above all fitted carpets, curtains, fixtures and fittings and garden outbuildings and ornaments are excluded from the sale. None of the statements in these particulars are to be relied upon as statements or representatives of fact. Photographs are for guidance only and do not imply items shown are included in the sale - some aspects may have changed since they were taken. No person in the employment of Finn's has authority to give any representation or warranty in relation to this property.

FINN'S CANTERBURY
82 Castle Street
Canterbury
Kent CT1 2QD
Lettings: 01227 452111

FINN'S SANDWICH
2 Market Street
Sandwich
Kent CT13 9DA
Lettings: 01304 614471

FINN'S ST NICHOLAS AT WADE
The Packhouse
Wantsum Way
St Nicholas at Wade
Kent CT7 0NE
01843 848320

